

7.7 OPTION 7

Option 7 Delivers a new leisure facility, 250 space multi storey car park and approx 200sq m of retail space on the Axe Street car park site adjacent to the existing abbey sports centre site. This option would allow for existing centre to remain operational whilst the new development takes place but would require the loss of car parking provision to be addressed.

The facility is entered from the town square and southern side of the town hall building via a covered colonnade which provides shelter for an area of retail units. Once inside the facility circulation is via a street glazed entirely to one side. The wet and dry change areas are both located in the same vicinity - the wet services, the 25 x 13 m 6 lane pool and 13 x 7 m learner pool and the dry services the 4 court sports hall.

There is a ground floor break out area with vending over looking the learner pool and main street.

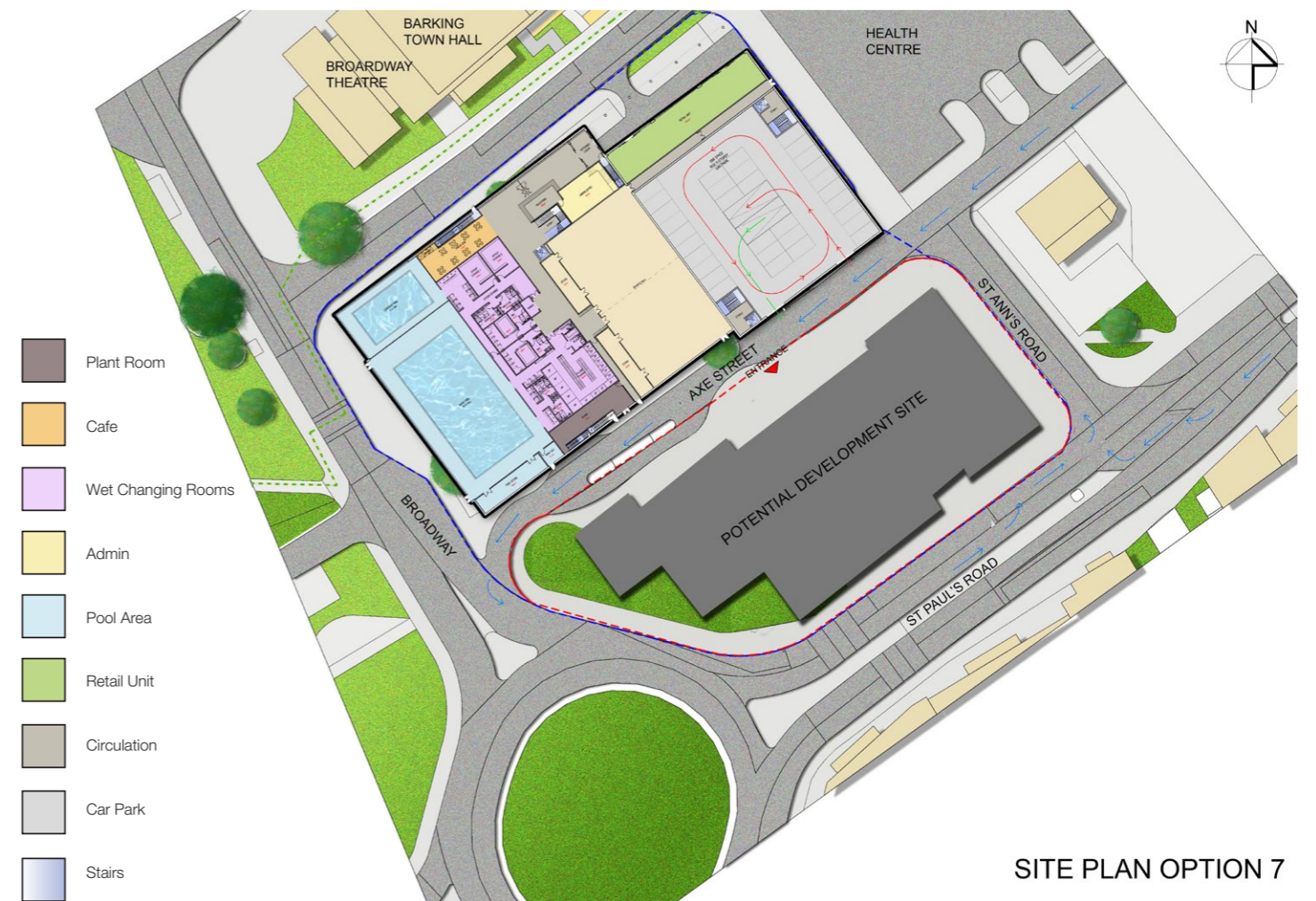
The first floor is accessed by a feature stair located behind the reception area and accessible 8 person lift.

The first floor also has a small break out are and vending.

There is a 80 station gym, 2 dance studios all with changing facilities. There is also a spectator seating area overlooking the main pool.

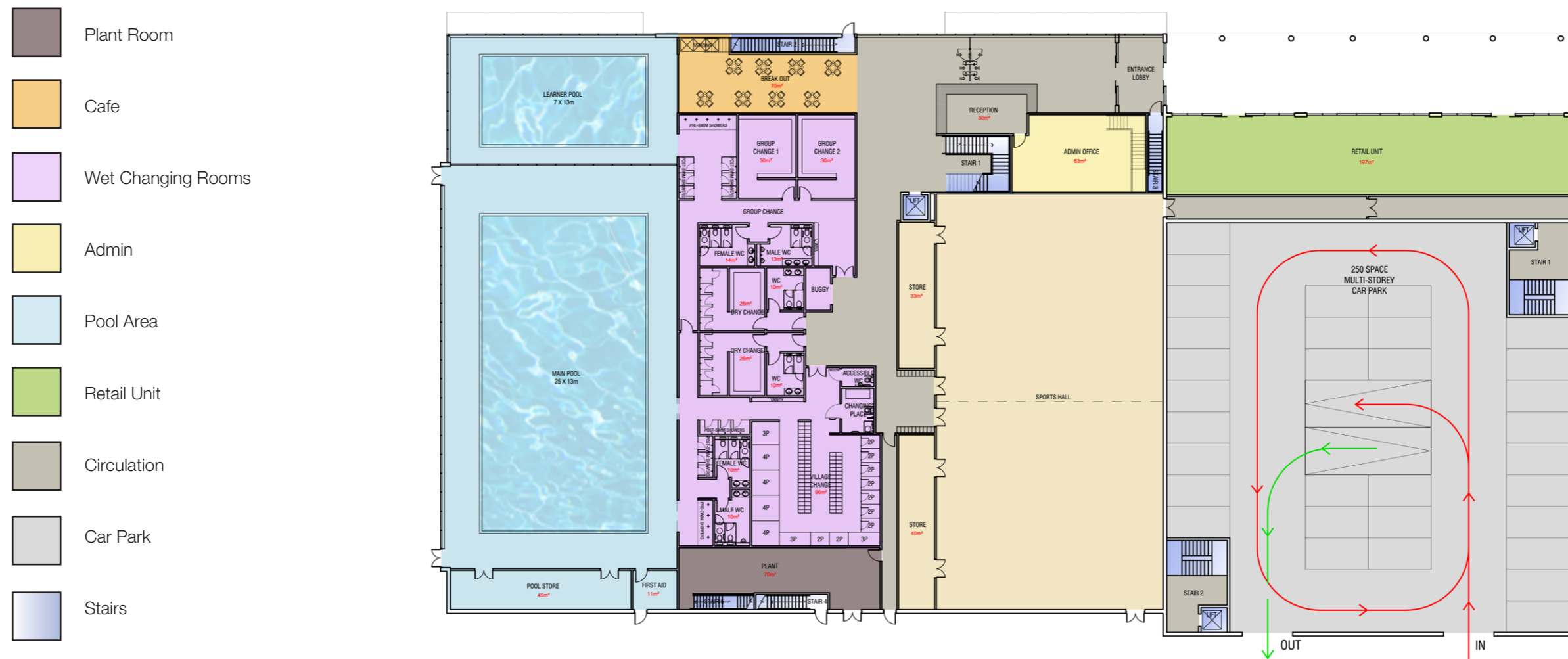
The gym and studio / have views over the sports hall and pool hall respectively.

The 250 space multi storey car park is accessed from Axe street and will be designed so as to blend with the rest of the facility with all vehicles screened from public view.

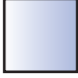

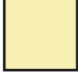



SITE PLAN OPTION 7

7.7 OPTION 7 - GROUND FLOOR



7.7 OPTION 7 - FIRST FLOOR

-  Studio
-  Plant Room
-  Dry Change
-  Stair
-  Car park
-  Staff Welfare
-  Spectator Seating
-  Gymnasium
-  Circulation

